



MTi13 Thermal Imager

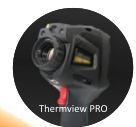
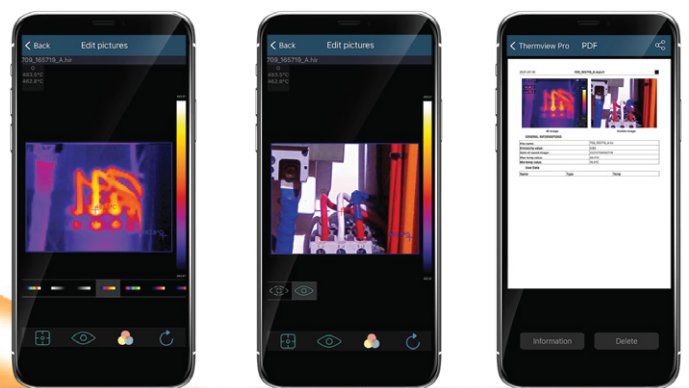
Detecting a hot connection in a distribution board has never been this easy. The MTi13 is focus free and has a large touch screen that makes detecting and analyzing hot spots quick and easy. This lightweight thermal imager with 80x80 pix resolution at 50Hz offers real-time detection of hot spots ideal for maintenance electricians. The Wi-Fi functionality allows the user to transfer live thermal information to a smart device for analysis. It features adjustable emissivity, temperature ranges from -20°C to 650°C, 3 moveable spots and area temperatures, centre spot, automatic Hot and Cold spot markers; and line measurement. The instrument comes supplied in a hard carry case and includes a charging base, microSD card and Type-C data cable.

Features

- 80x80 Pixel Thermal Detector
- 6,400 points real temperature
- 50Hz Image Frequency
- Hot, Cold and Centre Spot Temperature
- 3 Area and 2 Line Analysis
- 3 Manual Spots
- Hot, Cold and Centre Spot Temperature
- 3.5" TFT LCD display, Touch Screen
- Instant share & save via WiFi to PC, iOS and Android smart devices
- Colour Palettes include Iron, Rainbow, Grey, Grey Inverted, Brown, Blue/Red, Feather, Zone Alarm
- Rugged and industrial design casing
- Easy to use functions



Function	Range
Imaging and Optical Data	
Field Of View	21° x 21°
Spatial Resolution	4.53mrad
Thermal Sensitivity	<0.1° at 30°C (80°F)/100mK
Image Frequency	50Hz
Focus Mode Manual	
Focus Mode	Focus Free
Focal Length	7.5mm
Focal Plane Array (FPA)/Spectral Range	Uncooled Microbolometer/8-14µm
IR Resolution	80 x 80 pixels
Image Presentation	
Display	3.5" colour TFT LCD, Touch Screen
Display Resolution	640 x 480 pixels
Image Modes	IR Image, Visual, Pic-in-pic, Thermal Fusion, Zone Alarm
Colour Palettes	Iron, Rainbow, Grey, Grey Inverted, Brown, Blue/Red, Feather
Measurements	
Object Temperature Range	-20 to 650°C (-4 to 1202°F)
Object Temperature Accuracy	±2°C (3.6°F) or ±2% of reading
Measurement Analysis	
Spot	Centre Spot, 3 Manual Spots
Automatic	Automatic Hot/Cold Detection
Line	2 Line Analysis
Area	3 Area Analysis
Adjustable Emissivity	0.01 to 1.0
Measurement Correction	Emissivity, Reflected Temperature, Ambient, Temperature, Humidity, Infrared Compensation, Distance Compensation
Storage	
Storage Media	8GB Micro SD Card, 3.4GB Internal EMMC
Video Storage Mode	Standard MPEG-4
Image Storage Mode	JPEG and HIR and simultaneous visual image including measurement data
Data Communication Interfaces	
Interfaces	Type-C
Wi-Fi	802.11, transfer images and real time video stream
Size	224 x 77 x 96mm
Weight	500g



MTi13 | 80 x 80 Pixels with Wi-Fi

Contact Us
South Africa

www.major-tech.com sales@major-tech.com

Australia

www.major-tech.com.au info@major-tech.com.au